

you can
Canon

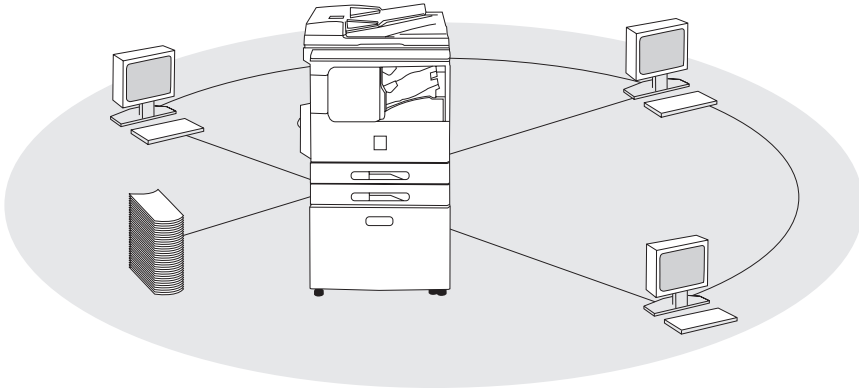
iR 1600
iR 2000

Multifunctional
Digital Systems

Go digital - and benefit from
affordable, versatile performance



- 16 ppm output (iR1600)
- 20 ppm output (iR2000)
- Fully featured digital copying
- Network printing capability
- Professional image quality
- Compact and reliable design
- Up to A3 paper handling
- Easy and efficient operation
- Extensive paper supply
- Built-in finishing options



Add on Canon's network printing capability to increase productivity

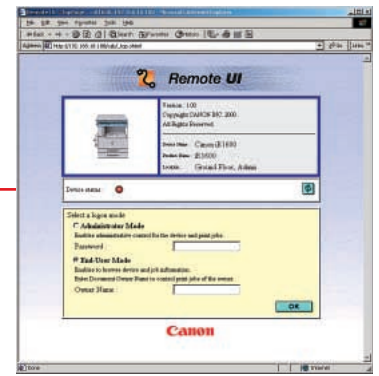
Enabling efficient solutions

Benefit from a compact, cost-effective digital copier that delivers both quality and productivity. Select the entry-level iR1600 for smaller workgroups - or the more powerful iR2000 for higher volume output. Either way you profit from a flexible, modular design that allows easy configuration to suit your exact needs, including a network printing capability. You can even take advantage of Canon's smart solutions that provide powerful applications for workflow management and full document accounting. Protecting your investment as your business grows.

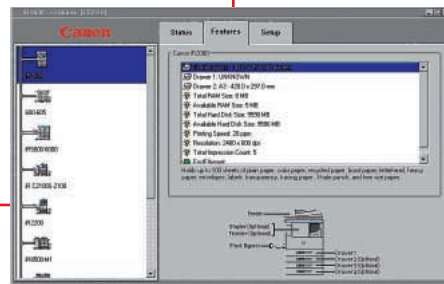
Enhancing image quality

Both digital systems offer a high 1200 x 600 dpi resolution, to deliver consistently high image quality for text and images. Include the network printing option and the resolution rises to 2400 x 600 dpi, with AIR smoothing technology. Optional PostScript® and PCL emulations are available to maximize printing output, providing a truly professional finish.





Enhance workgroup efficiency via the Remote User Interface



Simplify systems management with Canon's NetSpot® Suite

Productive accessories

Innovative and space-saving finishing options include a built-in finisher offering full sorting and stapling functions. Or select an inner 2-way tray that separates out copies and prints. An ADF (Automatic Document Feeder) handles all originals smoothly. Plus the standard paper supply can be supplemented by up to three additional 250-sheet cassettes.

Integrated ease

A clear, intuitive control panel ensures effortless operation at all times. The network printing option includes a remote UI (User Interface) for workgroups - delivering seamless handling of all print jobs direct from the desktop. A 10 GB hard disk can also be added to provide storage and spooling facilities for network printing, improving printing efficiency.

Solutions to save time and money

Digital versatility lets you share departmental printing resources far more efficiently. So now you can handle peak workgroup printing demand smoothly, saving time and increasing reliability. While full document accounting enables effective cost control and optimum allocation of all resources.



Specifications iR1600 / iR2000

Type: Desktop type

Copying System: Laser dry electrostatic transfer system

Platen: Fixed

Originals: Paper sheet, books and three-dimensional objects up to 2 Kg

Maximum Original Size: A3

Copy Sizes: A6-A3

Scanning Resolution: 600 x 600 dpi / 256 levels

Printing Resolution: 1,200 x 600 dpi (Copy), 2,400 x 600 dpi (PDL Print)

Zoom: 50%-200% (1% increments)

Speed: 16 / 20 (A4)

FCOT: 8.2 sec. Approx.

Warm-up Time: 30 sec. or less

Multiple Copies: 1-99

Dimensions (W x D x H): 615 x 631 x 560 mm iR1600, 615 x 631 x 645 mm iR2000

Weight: 38 Kg iR1600, 43.4 Kg iR2000

Power Consumption: 940 W or less

Paper: 64 to 90 g/m²

Input Capacity: 250 sheets x 1 iR1600, 250 sheets x 2 iR2000, Bypass capacity 100 sheets

Paper Options: Optional Cassettes: Up to 250 x 2 iR2000, Up to 250 x 3 iR1600, Finisher, 2 Way Inner Tray, ADF

Image Memory: 16MB standard, Up to 48MB (optional)

Printing (Optional)

Processor: Power PC405 200Mhz RISC Processor

RAM: 8 MB (Up to 72 MB)

PDL: PCL5e / PCL6 (PS3 - Optional)

Resolution: 600 x 600 dpi, 256 Tones (up 2,400 x 600 dpi with AIR)

Printing Speed: 16 ppm / 20 ppm

Paper Size: up to A3

Hard Disk: 10GB (Optional)

Network Connectivity: USB, Parallel, Ethernet (10/100BaseTX) (Optional)

Network Protocol: TCP/IP (LPD/LPR), IPX/SPX (Pserver/NDS/Rprinter/Nprinter), AppleTalk (PAP)

Supported OS: Windows 95/98/NT4.0/2000/ME/XP, Mac OS 7.5 or later, Solaris 1.1x, 2.5 or later

Optional Accessories:

ADF, Finisher, Inner 2 Way Tray, 32MB Memory Expansion, Card Reader, Cassette (1 tray), 2 tray iR 2000 only, 3 tray iR 1600 only, Pedestal, Printer Board, Ethernet Network Interface adapter, Postscript Module, Hard Disk, Flash ROM Module

™ All company and/or product names are trademarks and/or registered trademarks of their respective manufacturers in their markets and/or countries. Canon reserves the right to change specifications without notice.

iR 1600 iR 2000



you can
Canon

Canon Inc.
30-2, Shimomaruko 3-Chome, Ohta-ku,
Tokyo 146-8501, Japan
www.canon.com

Canon Europe Ltd
6 Roundwood Avenue
Stockley Park
Uxbridge
Middlesex UB11 1JA
United Kingdom
www.canon-europa.com

Canon (U.K.) Limited
Woodhatch, Reigate
Surrey RH2 8BF
Telephone No: 01737 220000
Facsimile No: 01737 220022
www.canon.co.uk

English Edition 0028W189
© Canon Europa N.V., 2002 (0202)