

Aficio™ CL5000

Aficio™



**Fast Black-and-white Printer  
with Built-in Colour Capabilities**

**RICOH**  
Image Communication

# Small Workgroup Print Solution with Colour Capabilities

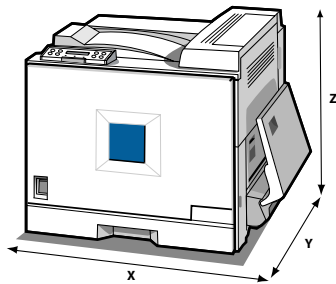
Until now you were in for a hard time when you wanted to buy a small office printer that could also occasionally print in colour. You would be forced to buy a black-and-white printer plus an additional colour printer. However, colour printers are mostly aimed at professionals in graphical environments and their performance and cost usually do not match your office requirements. The Aficio™CL5000, a member of Ricoh's new family of fast office printers, might well be the answer to all your office printing needs. It is a small footprint black-and-white printer with a speed of 36 pages per minute. But that's not all: its colour engine prints full-colour documents of superb quality at 10 pages per minute. Duplex printing is just as fast as producing single-side output: your productivity will soar! And it is affordable, both as to purchase price and running costs. In short, the Aficio™CL5000's all-round performance covers all your daily needs.



# Small Yet Powerful

Some of the most important concerns when buying a new printer are performance and floor space. Small printers are easily found in the market, but small usually means weak performance and little expansion. The Aficio™CL5000 is a very powerful printer designed from the ground up to be used by small workgroups of up to 20 people. Yet, the Aficio™CL5000 is small and has all the options you would only expect from larger printers.

**Aficio™CL5000**  
X = 540 mm  
Y = 670 mm  
Z = 470 mm



The Aficio™CL5000 is a very powerful printer that does not take up expensive office floor space.

## Space Saver

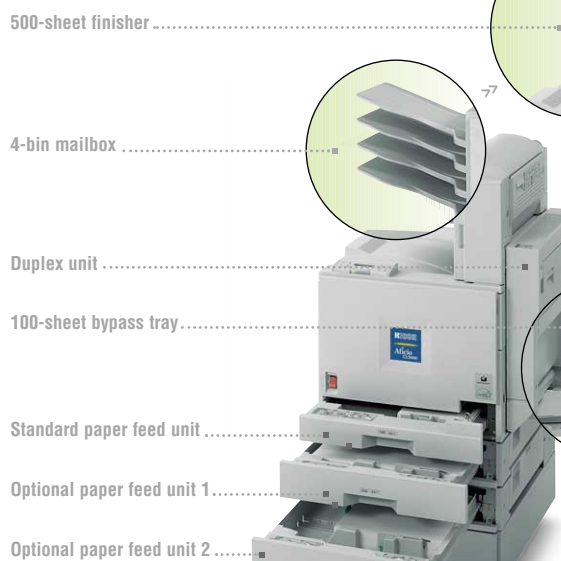
Most printers are bulky and need expensive office floor space. As this is becoming increasingly expensive, small footprint printers actually save money. Some small printers, on the other hand, grow exponentially as soon as you add a duplex unit or any other option. The Aficio™CL5000 is the exception to the rule. Even with all the possible options installed, the Aficio™CL5000 takes up very little space as the options are built on top of the printer, not sideways.

## Every Option you Need

The Aficio™CL5000 provides all the expansion possibilities you may ever need. It comes standard with a 250-sheet tray and a 100-sheet bypass tray and can be expanded with up to two 500-sheet trays. An extra paper feed unit gives users additional flexibility to select various paper sizes (A3 - A6) at the same time. You can also install a 4-bin mailbox for up to 5 different paper exits. And to professionally finish your output, you can attach the optional 500-sheet finisher. True to its calling, the Aficio™CL5000 is easily expandable and thus great for workgroup use.

## Keeps Going

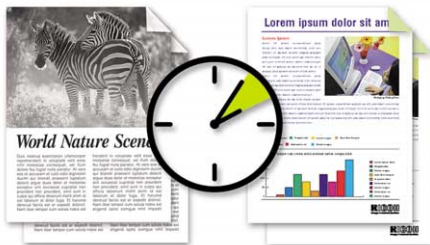
The Aficio™CL5000 keeps going, even when used to its limits. This durable printer is designed to handle your small workgroup's every need. In addition, consumables are affordable and last beyond expectations. Toner yield, for example, lies between 18,000 and 10,000 developments for black-and-white and colour. The Aficio™CL5000 is exactly the versatile, reliable printer your workgroup needs.



You can expand the Aficio™CL5000 with a variety of paper input/output options to match your workgroup's precise needs.

# Fast Engine, Fast Software

The Aficio™CL5000 belongs to Ricoh's innovative range of Aficio™™ colour-capable printers that were designed with office productivity in mind. Workgroup users and administrators need high-performing printers enabling them to save time. Because of its speed and cleverly implemented features, the Aficio™CL5000 saves time and is a true cost saver.



36 ppm in B/W

10 ppm in colour

Printing at 36 pages per minute in black-and-white and 10 pages per minute in colour, the Aficio™CL5000 is a true time and cost saver.

## Speedy and Time-saving

The Aficio™CL5000 is a fast printer. It prints at 36 pages per minute in black-and-white while producing 10 full-colour pages per minute. It also does extremely well when it comes to warming up and printing the first page. Even duplex printing will not compromise your productivity: the Aficio™CL5000 maintains 100% of its simplex speed.

## Printing Efficiency

In addition to the common standard printer languages PCL5c and Adobe® PostScript® 3™, the Aficio™CL5000 features Ricoh's Refined Printed Command Stream (RPCS™). RPCS™ enables bi-directional communication between your workstation and the printer and increases the performance of 99% of your Windows®-based business applications by up to 30%. The icon-based interface of RPCS™ also encourages users to duplex, staple and use all the other features of the Aficio™CL5000. This will undoubtedly lead to more professional looking documents, more efficient printer use and a far more economical and ecological use of resources.

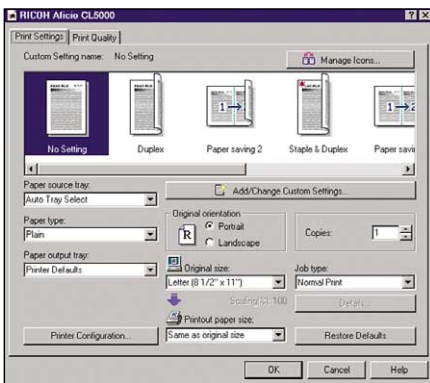
## Total Control, Low TCO

Ricoh has bundled a complete and integrated management software suite with the Aficio™CL5000. These tools allow you to manage this printer as well as every other Aficio™ device from any remote station on the network. And with the bundled SmartNetMonitor™ and DeskTopBinder™ V2 Lite software you obtain a complete document management solution.

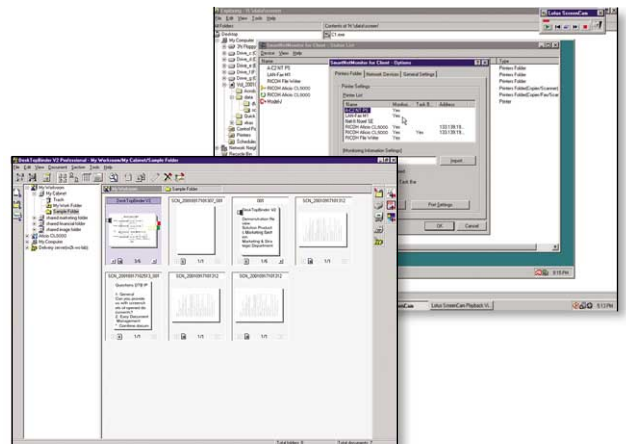
If you want to be in total control of the Aficio™CL5000, you can opt for the user account enhance unit. This allows you to accurately control access to the printer's colour capabilities. You can allow only specified users to print in colour, or you can enforce rule-based access to the printer. Of course, you can set up the authorisation list from your administrator's workstation. Not only does the Aficio™CL5000 save you time, it also keeps your Total Cost of Ownership (TCO) low by providing easy and affordable maintenance.



Adobe® PostScript® 3™



Thanks to RPCS™, users can save different print settings for a variety of print jobs and store them under a user-created icon.



Whereas SmartNetMonitor™ tracks the status of networked peripherals, DeskTopBinder™ V2 Lite software enables you to print documents created in different applications as one file.

# Network or Stand-alone

The variety of the Aficio™CL5000's network options makes it a suitable printer for every office environment. Whether you use it as a high-performing stand-alone printing system, or as a networked workgroup printer in a small corner of a shared office, the Aficio™CL5000 is the right choice for demanding print jobs.

## Flexible Printing

With its fast Ethernet 10/100 Base TX NIB, the Aficio™CL5000 can be integrated with most, if not all, modern office networks. Using its fast Ethernet connection, it will process digital documents and turn them into paper within seconds. You can also connect the Aficio™CL5000 through USB2.0 and IEEE 1394 and turn it into a high-performing personal printer.

## Network Environments

The Aficio™CL5000 supports every modern network protocol (TCP/IP, IPX/SPX and NetBEUI/NetBIOS) and feels right at home with Microsoft® Windows® 95/98/Me/NT4.0/2000/XP as well as in Macintosh environments. You can access all the printer's PostScript® power and input and output features when it is connected through the Ethernet interface. And to meet the needs of the most demanding users, the Aficio™CL5000 can be fully integrated with wireless LAN. This highly sophisticated network technology allows you to place the Aficio™CL5000 in a corner of the office and print to it wirelessly from another room: efficient and productive printing without cable hassles!

## Printing Made Affordable and Secure

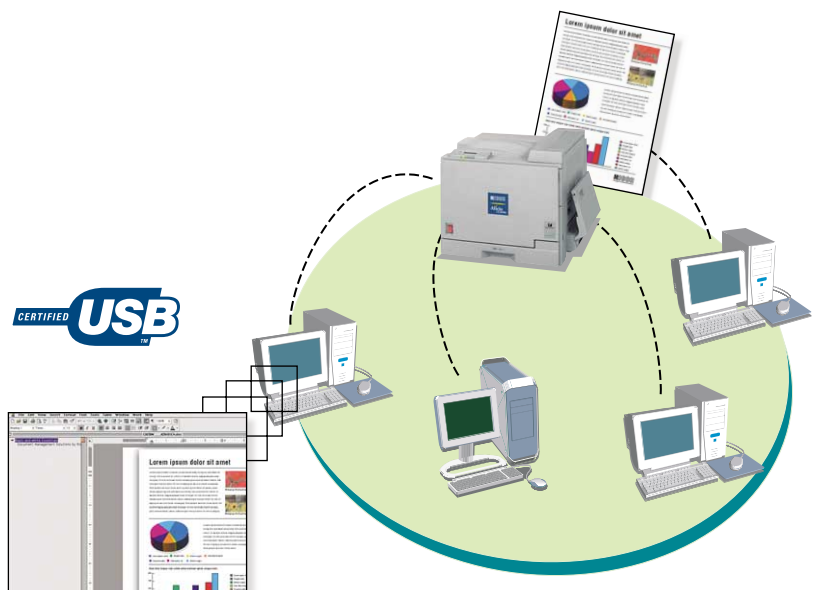
The Aficio™CL5000 supports Ricoh's cost-saving Sample Print™ feature and its Locked Print™ system. With Sample Print™ you can actually save on paper and consumables by checking the first document before releasing the rest of the job at the control panel. Locked Print™ ensures the confidentiality of your documents is not compromised as a password needs to be entered at the control panel before the document is released. To accommodate these features and store additional fonts, the Aficio™CL5000 can be equipped with a 20 GB hard disk.



Easy to maintain, the Aficio™CL5000 boasts a remarkably low Total Cost of Ownership.



To handle sensitive information securely, the Aficio™CL5000 is equipped with Locked Print™ offering password-protected access.



The Aficio™CL5000 can be fully integrated with wireless LAN and feels right at home with all modern network protocols.

## Specifications

### General

Print speed (simplex/duplex):	
Black-and-white:	36 prints per minute (A4)
Full colour:	10 prints per minute (A4)
First print speed:	
Black-and-white:	7.5 seconds or less
Full colour:	18 seconds or less
Warm-up time:	99 seconds or less
Dimensions (W x D x H):	540 x 670 x 470 mm
Weight:	59 kg or less
Power source:	220 - 240 V, 50/60 Hz
Power consumption:	
Maximum:	1.5 kW/h
Energy saver mode:	35 W/h
Environmental features:	Energy Star® compliant

### Controller

Processor:	RM5261 250 MHz
Memory:	
Standard:	64 MB
Maximum:	384 MB
Printer languages/resolution:	
PCL5c:	600 x 600 dpi (both 1- and 2-bit)
Adobe® PostScript® 3™:	600 x 600 dpi (both 1- and 2-bit)
RPCS™:	1,800 x 600 dpi equivalent
Drivers:	
PCL5c/RPCS™:	
Windows® 95/98/Me/NT4.0/2000/XP	
Adobe® PostScript® 3™:	
Windows® 95/98/Me/NT4.0/2000/XP	
Mac OS 8.6/9.x/10.1.x	
Fonts:	
PCL5c:	35 Intelli fonts 10 true type fonts 1 bitmap font (31 fonts can be downloaded with Agfa Font Manager)
Adobe® PostScript® 3™:	136 Adobe® type 1 fonts

### Connectivity

Network protocols:	TCP/IP, IPX/SPX, NetBEUI, AppleTalk
Supported networks:	Novell® NetWare® 3.12 or later/4.1 or later/5.0/5.1 Windows® 95/98/Me/NT4.0/2000/XP Mac OS 8.6/9.x/10.1.x UNIX Solaris 2.6/7/8, HP-UX 11.0 Red Hat Linux 6.2/7.0/7.1/7.2
Interface:	
Standard:	IEEE 1284 I/F Ethernet 100/10 base-TX USB2.0
Network utilities:	SmartNetMonitor™ DeskTopBinder™ V2 Lite

### Paper handling

Paper input capacity:	
Standard:	250-sheet paper tray 100-sheet bypass tray
Maximum:	1,350 sheets
Paper output capacity:	
Standard:	400 sheets
Maximum:	900 sheets
Paper size:	
Paper Tray:	A6 - A3
Bypass Tray:	A6 - A3+
Paper weight:	
Paper Tray:	64 - 105 g/m <sup>2</sup> 64 - 128 g/m <sup>2</sup> (optional)
Bypass Tray:	64 - 163 g/m <sup>2</sup>
Media:	Plain paper, recycled paper transparencies, laser printer labels, envelopes

### Consumables

Toners:	
Black:	18,000 sheets <sup>1</sup>
C, M, Y:	10,000 sheets <sup>1</sup>

### Options

Internal options:	20 GB Hard Disk Drive 64/128/256 MB SDRAM DIMM IEEE 1394 interface Wireless LAN (IEEE 802.11b) User Account Enhance Unit
External options:	2 x 500-sheet paper tray Duplex unit 500-sheet finisher 4-bin mailbox

<sup>1</sup> A4 with 5% coverage

For availability of models, optional apparatus and software, please consult your local Ricoh supplier.



Ricoh has determined that this product meets the ENERGY STAR guidelines for energy efficiency.

Ricoh believes in conserving the earth's precious natural resources.

All brand and/or product names are trademarks of their respective owners. Specifications and external appearance are subject to change without notice. The colour of the actual product may vary from the colour shown in the brochure.

# RICOH

Image Communication [www.ricoh.co.uk](http://www.ricoh.co.uk)

RICOH UK LTD, Ricoh House, 1 Plane Tree Crescent, Feltham, Middlesex, TW13 7HG. Phone: +44 (0)20-8261 4000 Fax: +44 (0)20-8261 4288

For more information, please contact: