

Superior Colour
and High Speed

Aficio™ CL7000



RICOH
Image Communication

The Affordable High Speed Colour Document Handling System

Ricoh has shaken up the printer market by introducing revolutionary colour laser printers that have taken the lead in the high speed printer segment. Real world innovations and an open ear for our users enable us to present you with superior print solutions. Our approach is that simple colour printing must be just as easy, fast and affordable as monochrome printing. The Aficio™CL7000, flagship of Ricoh's new printer generation, responds to that criteria. The Aficio™CL7000 easily prints newsletters, direct mailings and stationery that look just as good as professionally printed documents. It has a fast warm-up time and a high full colour speed of 28 pages per minute (38 pages in black-and-white). Double sided prints come out at almost exactly the same rate! The Aficio™CL7000 is designed to incorporate all the finishing options modern office applications may possibly require. You can print your office documents reliably and fast, directly or over the network. And you have the capability to embed high grade colour whenever you need it. In fact, as the Aficio™CL7000 is affordable as well, it makes other printers obsolete.



Magically Fast

The Aficio™CL7000 comes close to instantaneous printing with a fast 500 MHz CPU and a warm-up time of just 99 seconds. It offers the fastest possible communication at 480 Mbit/second as well as Ricoh's super fast RPCS™ printer language.

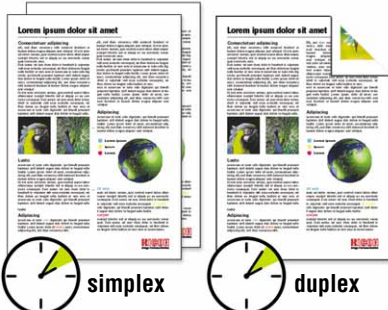
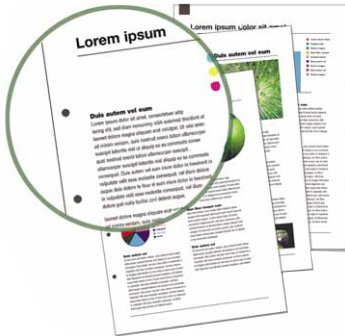


Wireless Printing

Wireless LAN frees your office from cables. The Aficio™CL7000 prints wireless in every WLAN mode (IEEE 802.11b). With a Bluetooth card installed, you can directly print from PDAs and mobile devices in full colour.

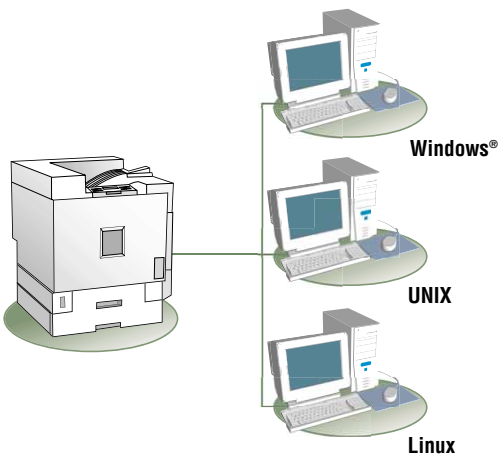
Finishing: Not an Afterthought

The Aficio™CL7000 has an exceptionally complete set of finishing capabilities as well as a convenient mailbox to effortlessly collect your prints. You can easily expand paper capacity up to 3,100 sheets. All options are integrated into the printer's chassis. No protruding extras, but well thought out, user attachable options.



Fast Double Sided Output

The printer's duplex unit is so efficiently designed, it produces double sided output at almost exactly the same speed as simplex printing. You can now economise on paper, decrease costs and reduce the impact on the environment. And always enjoy the high productivity and finishing options you are used to when printing in one sided printing mode.



Computing Environment Support: Exceptional

The Aficio™CL7000 supports virtually every computing environment from Windows® all the way up to UNIX and Linux.

Ease of Use and Maintenance

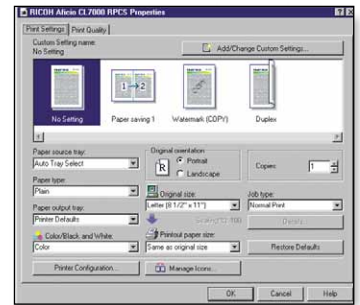
The ergonomically designed paper trays allow you to drop in a whole stack of paper at once and see it fall neatly in place. Replacing toner and other consumables is just as easy. Add remote web based monitoring and the Aficio™CL7000 is one of the most easy going printers in the market.



The image on this double page is not a real photograph and slight differences in detail might appear.

The Perfect Printer Driver

RPCS™ is up to 30% faster than anything else on Windows®! It requires one click to start any print job, no matter how complex the settings are. You can save different printer settings and store them under a personalised icon. Typical print jobs have already been prepared. Of course common printer languages such as PCL and Adobe® PostScript® are supported as well.



Networking Wizard

The Aficio™CL7000 connects to almost anything: USB1.1 and 2.0, IEEE 1394, parallel and Ethernet 10 base-T/100 base-TX as well as wireless LAN and Bluetooth. Whatever office environment you have, the Aficio™CL7000 fits in, easily and reliably.



Lock, Proof and Spool

The Aficio™CL7000 supports Locked Print™, a system that allows for confidential printing. The printer will not release your confidential job until you type your password at the printer control panel. Sample Print™ saves paper and toner by enabling you to print one sample before printing a multi-document job. Job Spool™ allows you to easily save and delete print jobs on the optional hard disk.



Managing the Aficio™CL7000

Bundled productivity software includes SmartNetMonitor™ for comprehensive network device management and the DeskTopBinder™ V2 Lite document management and job binding suite. Web Status Monitor is a browser based device monitoring tool for all inclusive printer management of online output devices.

Why Monochrome if Colour is Just as Fast and Efficient?

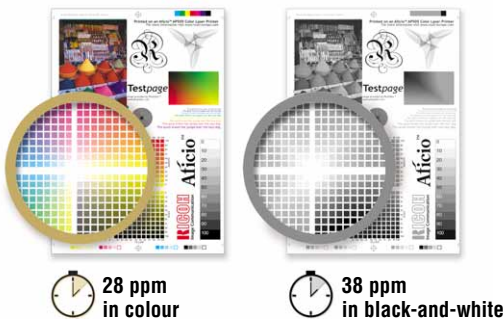
The Aficio™CL7000 takes you one step ahead of the competition on the road to the ultimate print solution. There is virtually no warm-up delay. The Aficio™CL7000 supports all current industry connection standards and is built with the same ecological care that you have become accustomed to from Ricoh.

The Performance/Quality Equation

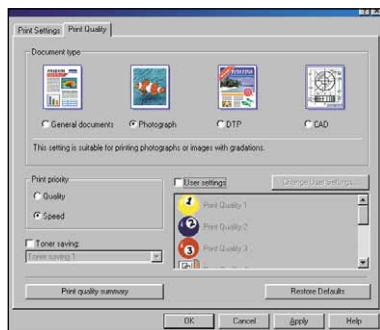
The Aficio™CL7000: colour does not slow down your productivity. This system prints at 28 ppm in full colour. That is a performance level you are used to from a fast monochrome machine. And with an output quality of 1,200 dpi, quality meets speed.

Professional Colour without the Hassle

Produce vibrant colour without manual adjustments and make the Aficio™CL7000 your colour printer for stationery, direct mailings and other applications. Any user can store his own personal colour settings using RPCS™. With the Black Over Print function enabled, the Aficio™CL7000 will automatically correct image shifts occurring between dark print on a lighter colour background.



Ricoh once more gives proof of its commitment to the environment: all European facilities are certified under ISO 14001.



With Ricoh's RPCS™, even the print quality of a specific job can be adjusted on your PC screen.

Ricoh's Green Commitment

Environmental protection is a key priority at Ricoh. Formal efforts to protect the environment started at Ricoh in 1976. As a result, Ricoh was the first company in the industry to have all European facilities certified under ISO 14001, the international standard for environmental management. By offering free-of-charge collection and recycling of machines and parts, Ricoh enables customers to minimise the impact on the environment.

Environmental Features

All Ricoh's products comply with the Energy Star® standard for energy-efficient products. The Aficio™CL7000 is no exception. But there is more: this printer has been made with zero-waste and zero-emission in mind. Environment friendly features are:

- Easy-to-use double sided printing capabilities for reduced paper usage
- Intuitive driver that is less prone to misprints
- Sample Print™ to minimise misprints with multiple print jobs
- Easily recyclable printer parts and environmental friendly toner bottle
- Low power consumption
- Design already compliant to 2005 EU environmental legislation



The Aficio™CL7000 offers a variety of environment friendly features including easy to use double sided printing capabilities for reduced paper usage.



Aficio™ CL7000

Specifications



GENERAL

Technology:
 4 drums tandem method
 laser beam scanning
 electro-photographic printing and
 dual-component toner development
 Continuous print speed (simplex)¹:
 Black-and-white:
 38 prints per minute (A4)
 Full colour:
 28 prints per minute (A4)
 Warm-up time: 99 seconds or less
 First print speed:
 Black-and-white: 9 seconds
 Full colour: 12 seconds
 Dimensions (W x D x H):
 575 x 678 x 745 mm
 Weight: 85 kg or less
 Power source:
 220 - 240 V, 50/60 Hz
 Power consumption:
 Maximum: 1.5 kW/h
 Energy saver mode: 45 W
 Duty cycle:
 200,000 pages per month

CONTROLLER

Processor: RM7000C 500 MHz
 Printer languages/resolution:
 PCL5c: 600 x 600 dpi
 Adobe® PostScript® 3™, RPCS™:
 600 x 600 dpi/1,200 x 600 dpi
 1,200 x 1,200 dpi
 Memory:
 Standard: 64 MB
 Maximum: 384 MB
 Drivers:
 PCL5c/RPCS™:
 Windows® 95/98/Me/NT4.0/2000/XP
 Adobe® PostScript® 3™:
 Windows® 95/98/Me/NT4.0/2000/XP
 Macintosh 8.6 or later
 Macintosh X (native mode), UNIX
 Fonts:
 PCL5c: 35 intelli fonts
 10 true type fonts
 1 bitmap font
 (31 fonts can be downloaded)
 Adobe® PostScript® 3™:
 136 Adobe® type 1 fonts

CONNECTIVITY

Network protocol:
 TCP/IP, IPX/SPX
 NetBEUI, AppleTalk
 Supported networks:
 Novell® NetWare® 3.12 or later
 4.1 or later/5.0/5.1
 Windows® 95/98/Me/NT4.0/2000/XP
 UNIX Sun® Solaris 2.6/7/8
 HP-UX 10.x/11.x
 SCO OpenServer 5.0.6
 RedHat® Linux 6.x/7.x
 IBM® AIX v4.3/5L v5.1
 Macintosh 8.6 or later
 Macintosh X (native mode)
 Interface:
 Standard:
 Bi-centronics IEEE 1284 ECP
 Ethernet 10 base-T/100 base-TX
 Option:
 IEEE 1394
 USB1.1/2.0
 Wireless LAN (IEEE 802.11b)
 Bluetooth
 Network utilities:
 SmartNetMonitor™
 DeskTopBinder™ V2 Lite
 Web Status Monitor

PAPER HANDLING

Paper input capacity:
 Standard:
 2 x 500-sheet paper trays
 100-sheet multi-bypass tray
 Maximum: 3,100 sheets
 Paper output capacity:
 Standard: 600 sheets
 Maximum: 3,100 sheets
 Paper size:
 Paper trays: A5 - A3
 Bypass tray: A3 oversize
 Paper weight:
 Paper trays: 60 - 105 g/m²
 Bypass tray: 60 - 163 g/m²
 Media: Plain paper, recycled paper
 transparencies
 laser printer labels, envelopes

CONSUMABLES

Toners:
 Black: 20,000 sheets²
 C, M, Y: 10,000 sheets²
 The Aficio™CL7000 ships with
 a starter kit.

OPTIONS

Internal options:
 40 GB Hard Disk Drive
 64/128/256 MB SDRAM DIMM
 IEEE 1394
 USB1.1/2.0
 Wireless LAN (IEEE 802.11b)
 Bluetooth
 External options:
 1 / 2 x 500-sheet paper trays
 2,000-sheet large capacity tray
 2,500-sheet finisher
 4-bin mailbox
 Cabinet

¹ The duplex print speed is approximately
 100% of the simplex print speed.

² A4 with 5% coverage

For availability of models, optional apparatus
 and software, please consult your local
 Ricoh supplier.



Ricoh has determined that this product
 meets the ENERGY STAR guidelines for
 energy efficiency.

Ricoh believes in conserving the earth's
 precious natural resources.

All brand and/or product names are
 trademarks of their respective owners.

Specifications and external appearance
 are subject to change without notice.
 The colour of the actual product
 may vary from the colour shown
 in the brochure.



For more information, please contact:

RICOH UK LTD, Ricoh House
 1 Pine Tree Crescent, Feltham
 Middlesex TW13 7HG
 Phone: +44 (0)20-8261 4000
 Fax: +44 (0)20-8261 4296

www.ricoh.co.uk