

MINOLTA

# DIALTA™

## Di 550

The essentials of imaging



**55**  *copies / min*  
A4crosswise



# Digital high-speed processing, plus 600dpi resolution.

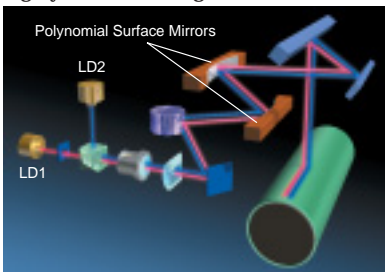
The Di550 delivers high-speed, 55 pages per minute (A4 crosswise) copy output, as well as simple booklet creation. Its multi-functional and digital capabilities make it highly productive and perfect for any office environment.

**Copy** Digital processing is the cornerstone of its high productivity copying and dynamic features.

## High Productivity

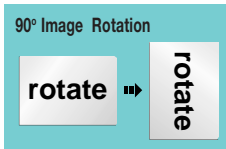
### 55 copies/min with 2LD Printhead

High-speed copying is achieved by a 2LD (Laser Diode) Printhead, while new Polynomial Surface Mirrors reproduce highly accurate images.



### 90° Image Rotation

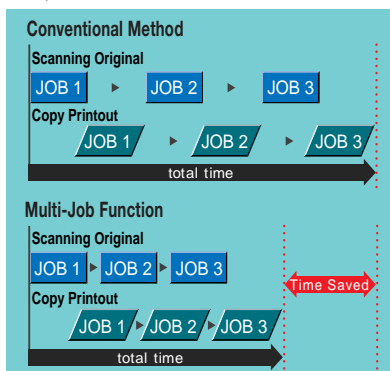
This function rotates the image 90° and feeds paper through in a crosswise direction. Should you unintentionally set an A4 original lengthwise, or need to reduce an A3 size original to A4 size, the Di550 will copy onto A4 size sheets using a crosswise format. This helps maximize the Di550's top speed of 55 copies/min.



### Multi-Job Function\*

The Di550 can handle up to five tasks simultaneously. You can double your efficiency by scanning one document while another is being printed.

\*Requires HDD-1 and M32-2.



## 1 Original Scan/Multiple Copies

Thanks to its sophisticated memory system, the Di550 allows you to print multiple copies after scanning a document through just once.

### Non-Stack, Automatic Duplex Copying

This function first reads both sides of a document. Then in order, it recalls the appropriate side from its memory. As a result, copies are processed quickly without stacking paper.

### 6,550 Sheet Maximum Paper Load

The optional C-306/C-306L Large Capacity Cassette, in conjunction with the PF-115 Large Capacity Cabinet, give you a maximum 6,550 sheet paper load.



## High-Quality Images

### High Resolution 600dpi

A remarkable 600dpi is achieved for both scanning and printing. The Di550 uses the NMT (New Micro-Toning) developing system with 6µm particle toner to give you precise reproduction of both text and photos.

### Text, Photo, Text/Photo Mode

The Text Mode offers 600dpi, high resolution plus Edge Enhancement and smoothing effects using LIMOS (Laser Intensity Modulation System) Technology to reproduce text beautifully. Photo Mode richly expresses gradation using Error Defusion Technology. Text/Photo Mode reproduces crisp and sharp text while keeping photos smooth.

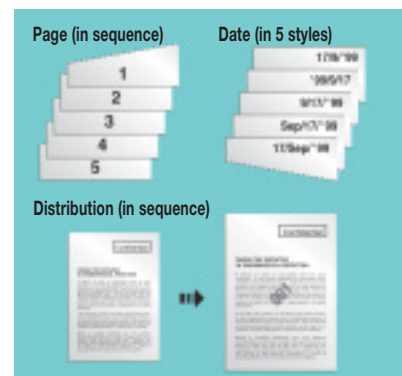
## High-Level Digital Functions

### Sorting Without a Sorter

If you have A4 size paper set lengthwise and crosswise, the Di550 can electronically sort your documents using lengthwise and crosswise sheets.

### Number/Image Stamping\*

\*Requires HDD-1 and M32-2



### Booklet Creation for Automatic Imposing

### Memory Recall Function, Convenient for Test Copying

### Image Repeat

### 25% to 400% Wide Zoom

## Environmentally Committed

Keeping in mind the importance of conservation, recycled materials are used in certain areas of the Di550.

### 55dB (A) Low Noise Design

### Low Energy Consumption (Energy Saver/Auto Power Off)

Meets ENERGY STAR Guidelines





## An Array of Finishing Functions (optional)

### 4 Finishing Selections to Meet Your Production Needs

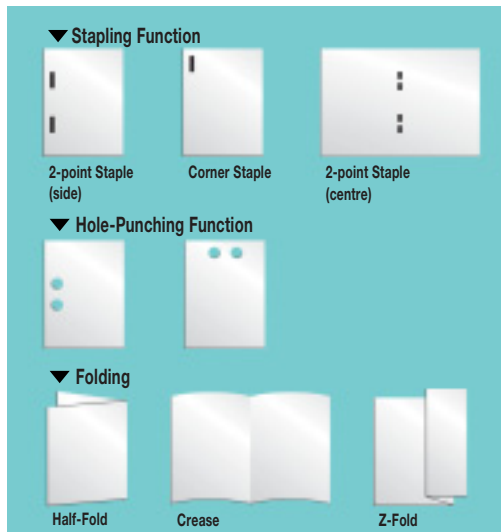
FN-5..... 2-point staple (side), corner, 2-point staple (centre), hole-punching and additional high quality functions such as z-fold, crease and half-fold.

FN-105.. 2-point staple (side), corner staple and hole-punching. Maintains 100% productivity of 55 pages/min (A4 crosswise), even when staple function is in use.

FN-106.. Corner stapling. Maintains 100% productivity of 55 pages/min (A4 crosswise), even when staple function is in use.

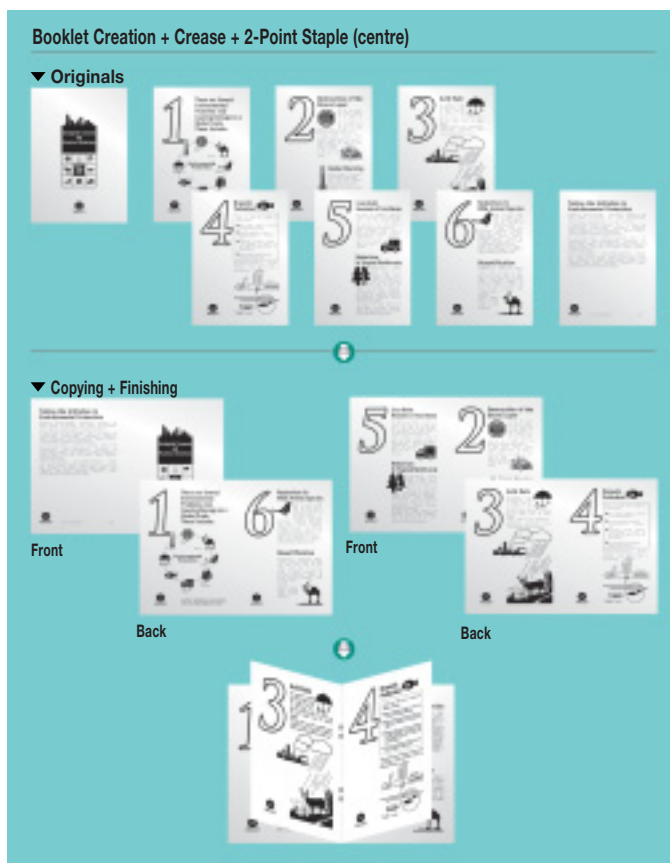
FN-503.. Corner stapling, hole-punching and output bin selection possible when printing.

Corner-staple angles differ with each model.



### Automatic Processes from Copying to Simple Booklet Creation

Attaching the optional FN-5 enables the Di550 to automatically scan originals, make duplex copies, fold and staple. It also conveniently makes simple booklets, pamphlets and manuals.



## Minolta CS Digital Technologies are incorporated into the DiALTA Di550

Image quality, productivity, operability, reliability, connectivity and environment. We've reexamined these six features, essential in all business equipment, to create Minolta's unique image information products. The DiALTA Di550 using these innovative CS Digital Technologies, provides efficient document work for complete customer satisfaction.

# Network Printer & Scanner Expandability for Network Use. Requires M32-2

## Network Connectivity

### A Network Printer and Scanner

When either the optional printer controller Pi5500(external) or Pi5501(embedded) is attached, the Di550 can be used as a network printer and scanner.



Adobe PostScript 3

### Network Printer Functions

#### 1 to 1 Printing Speed of 55 pages/min

The Di550 achieves high-speed printing of 55 pages/min even when using the stapling function\* with the FN-105/FN-106 Finishers attached.

\*During A4 crosswise printouts.

#### 600dpi High Image Quality

The Di550 offers a high resolution of 600dpi, plus utilizes LIMOS Technology to create a unique smoothing effect for beautiful printouts. Moreover, with Adobe PostScript 3, you receive many gradations in your halftones, for beautiful photo printouts.

#### A Variety of Finishing Functions

Even when printing from a PC, each Finisher will enable you to use virtually all of the copier Finishing functions, including Booklet Creation.

#### Mailbin Finisher

When the optional Mailbin Finisher FN-503 is attached, you can choose an output bin right from your PC.

## Network Tools for Efficient Print Work

### Fiery Downloader\*

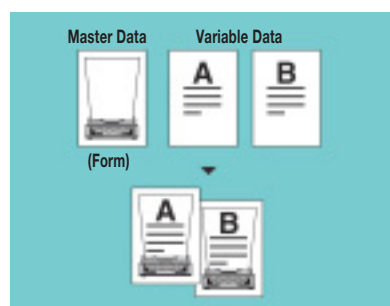
You can print out PS, EPS and PDF files without their applications.

\*When the Pi5500 is attached.

### Fiery FreeForm\*

This option enables you to easily make variable data printing by using your base form as the FreeForm master data and saving it in the Pi5500's HDD. You can instruct the printer to print out only the variable data, after which this data will be printed onto your base form. This is because the master data will be saved in the form of a completed RIP process. Therefore, data output time is drastically shortened. What's more, the documents' master data and variable data can be created in different platforms or applications.

\*When the Pi5500 is attached.



### Fiery DocBuilder\*

This optional feature enables you to preview job thumbnails and subsequent merging and editing of RIPed files. You can even save your data onto the printer controller's hard disk.

\*When the Pi5500 is attached.

### Network Scanner Functions

### Fiery Scan 2\*

Use the Di550 as a standard TWAIN scanner.

\*When the Pi5500 is attached.

### Scan to HDD\*

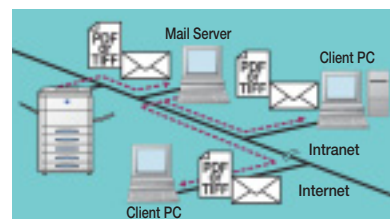
With this function, scanned data that has been stored in the controller's HDD, can be recalled from the client's PC.

\*When the Pi5500 is attached.

### Scan to E-Mail\*

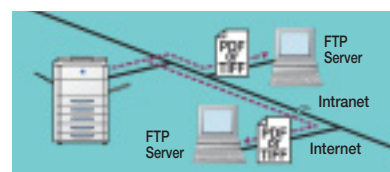
Scanned images can be transformed into Multi-TIFF or PDF form, enabling users to send them as attachments via e-mail.

\*When the Pi5501 is attached.



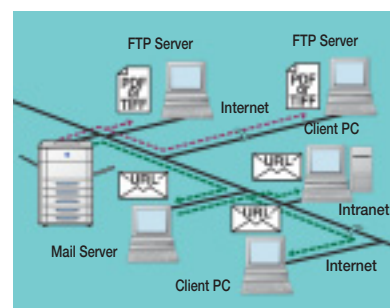
### Scan to Server\*

This function allows users to scan images in Multi-TIFF or PDF form, and send them out to the FTP server. Users can then access the FTP server to locate and retrieve the scanned images. Via PageScope Cabinet, the FTP server function increases the scanner's ease-of-operation.



For additional efficiency and convenience, this function can simultaneously e-mail the FTP server's URL to related personnel.

\*When the Pi5501 is attached.

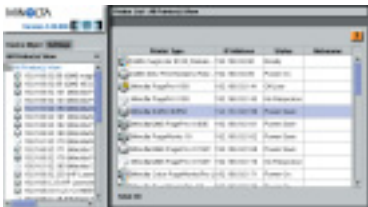


**Utilities for Easy Printer and Document Management**

**Network Management Utilities**

**PageScope™**

As Minolta's standard management tool for network devices, this enables the network manager to manage and control all information devices connected to the network at once.



**PageScope™ Light**

This allows you to monitor the condition of the Di550, such as toner depletion or paper run outs from the client PC.



**Fiery WebTools\***

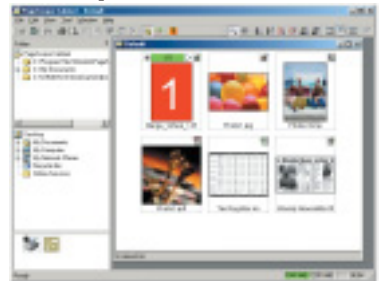
Fiery WebTools are included for easy task management from the client PC, using a Java-enabled Web browser.

\*When the Pi5500 is attached.

**Document Management Utilities**

**PageScope™ Cabinet**

This enables you to easily file and manage documents created in a variety of applications, as well as for scanned documents and photos. Saved documents can be shown as a list of small thumbnails. You can also combine documents just by dragging and dropping a document on top of another shown in the window.



All functions may not be available concurrently.

**System Accessories**



**Original Cover**

Holds your original in place when copying.



**Electronic Document Handler EDH-3**

Can set up to 100 sheets of one-sided or two-sided originals at one time.



**Large Capacity Cassette C-306**

This optional cassette holds a maximum 3,000 sheets of A4, B5 or letter-size paper.



**Large Capacity Cassette C-306L**

Holds a maximum 3,000 sheets of A4, B5, letter and legal size paper.



**Finisher FN-105**

Stapling and hole-punching features can manage sets of up to 50 sheets each. While sorting and grouping are available.

**Finisher FN-106**

Sets of up to 30 sheets each can be stapled, plus sorting and grouping are available.



**Mailbin Finisher FN-503**

Stapling and hole-punching sets of up to 50 sheets each are possible. And sorting and grouping are available. What's more, when printing, you can also select output bins or private bins.



**Finisher FN-5**

In addition to performing three kinds of folding functions, stapling, hole-punching, sorting and grouping are also possible.



**Large Capacity Cabinet PF-115\***

Holds up to 2,500 sheets of paper with a built-in automatic duplexing unit.

\*Must attach any one of the above 3 cabinets.



**2 Way Paper Feed Cabinet PF-208\***

Has two 500-sheet trays and a built-in automatic duplexing unit.

\*Must attach any one of the above 3 cabinets.



**Duplex Paper Feed Cabinet PF-7D\***

Has a built-in automatic duplexing unit and a large drawer for storing consumables.

\*Must attach any one of the above 3 cabinets.

## Minolta Genuine Consumables And Parts

To ensure the best possible use of our copiers in terms of cost, copy quality and service life, Minolta has extended its technical expertise as a manufacturer of precision equipment to the development and production of high-quality consumables and parts. For optimum performance and productivity, we recommend the use of Minolta's genuine consumables and parts.

## Di550 Specifications

Copying System:	Laser Electrostatic
Type:	Console/Stationary Platen
Resolution:	600dpi
Halftone:	256 gradations
Type of Originals:	Sheets, Books, 3-D Objects
Original Size:	Max. A3 (Ledger)
Copy Size:	A3 to A6 (Ledger to 4" × 5-1/2")
Copy Speed:	55 copies/min (A4 Crosswise)
1st Copy:	Less than 4 seconds (A4 Crosswise)
Magnification:	× 0.250 - 4.000 (Preset or Variable)
Exposure Control:	Automatic & Manual
Paper Feeding System:	With PF-208 attached: 4 Front-Loading Paper Drawers (500 sheets × 4) With PF-115 attached: 3 Front-Loading Paper Drawers (500 sheets × 2 + 2,500 sheets) With PF-7D attached: 2 Front-Loading Paper Drawers (500 sheets × 2)
Sheet Bypass:	Multiple Bypass (Up to 50 sheets: A3 to A6)
Multiple Copy:	1-999, Count-Down, Interruption Capability
Input Materials:	Plain Paper (60-90g/m <sup>2</sup> ) Thick Paper (90-157g/m <sup>2</sup> ) OHP Sheet by Multiple Bypass
Developing System:	NMT (New Micro-Toning) System
Photoconductor:	OPC Drum
Toner Supply Control:	Automatic Toner Density Control
Warm-Up Time:	Less than 240 seconds
Power Consumption:	1.7kW
Dimensions:	664 (W) × 756 (D) × 1,032 (H) mm (26-1/4" × 29 -3/4" × 40-3/4")
Weight:	With PF-208 attached: 159kg With PF-115 attached: 161kg With PF-7D attached: 151kg
Accessories:	Original Cover (OC-1) Electronic Document Handler (EDH-3) Finisher (FN-105) Finisher (FN-106) Finisher (FN-5) Mailbin Finisher (FN-503)

Accessories:	Large Capacity Cassette (C-306) Large Capacity Cassette (C-306L) Data Controller (D-103) Data Terminal (DT-103) Hard Disk Drive Kit (HDD-1) 32MB Memory (M32-2) Up Grade Kit for Di450/550 Printer Controller (Pi5500) Printer Controller (Pi5501)
--------------	--

## Pi5500/Pi5501 Specifications

Print Speed:	55 pages/min
Resolution:	600 dpi
CPU:	Pi5500: Intel Celeron/366MHz Pi5501: PowerPC 740/200MHz
RAM:	Pi5500: 64MB (Max. 128MB) Pi5501: 32MB (Max. 160MB)
Protocol:	EtherTalk*, IPX/SPX*, TCP/IP*
Interface:	IEEE1284 (Compatibility/ECP/Nibble Mode), 10BASE-T/100BASE-TX*
Printer Language:	Pi5500: Adobe PostScript 3, PCL5e Pi5501: PostScript 3, PCL5e, PCL6
Fonts:	Pi5500: Adobe PostScript Fonts (136 fonts), PCL Fonts (46 fonts) Pi5501: PostScript Fonts (136 fonts), PCL Fonts (45 fonts)
Operating System:	Pi5500: Windows 95/98, WindowsNT 4.0/2000, Mac OS Pi5501: Windows 95/98, WindowsNT 4.0/2000, Mac OS, Linux
Accessories:	Pi5501: Hard Disk Drive for Pi5501 Network Interface Card (NC-2)

\*Pi5501, when the optional NC-2 is attached.

### Product appearance, configuration and/or specifications are subject to change without notice.

DIALTA, NMT and Page Scope are registered trademarks or trademarks of KONICA MINOLTA BUSINESS TECHNOLOGIES, INC.  
Fiery and the Fiery logo are registered trademarks with the U.S. Patent and Trademark Office and certain other foreign jurisdictions. WebTools, Fiery Downloader, FreeForm and DocBuilder are trademarks of Electronics for Imaging, Inc.  
Windows and Windows NT are registered trademarks or trademarks of Microsoft Corporation.  
PCL is a registered trademark or trademark of Hewlett-Packard Company.  
Adobe and PostScript are registered trademarks or trademarks of Adobe Systems Incorporated.  
All other brand and product names are registered trademarks or trademarks of their respective owners.  
\*As an ENERGY STAR Partner, KONICA MINOLTA BUSINESS TECHNOLOGIES, INC. has determined that this product meets the ENERGY STAR guidelines for energy efficiency  
\*ENERGY STAR is a U.S. registered mark.